



Before servicing dumper, be sure that all sources of energy have been shut off, all potential hazards have been eliminated, and the dumper is locked-out and tagged-out in accordance with OSHA and ANSI requirements

Please see Marathon's Manual for Auger & Electric Cart Dumper (ECD) for Lockout/Tagout Procedure



Use our Go Canvas App to record and log the complete PM – On your smartphone download the Go Canvas app

- Check out Service Shack for videos on the Auger PM, Lock Out/Tag Out on the ECD and the operation of the Amazon Electric Cart Dumper (ECD) and Auger combo  
<https://www.marathonequipment.com/service-shack>
- Pictures will be required; the Go Canvas app uses the camera on your phone and will ask for the picture as needed. There is also a place at the end to add any photos you may want to add of other issues or repairs done.
- You can reach Marathon Tech Service at 877-258-1105, please let them know what site you are at, that you are on site waiting on a call back. They will place a ticket, and a tech will call back. You can also email Marathon Tech Service to create a ticket @ [techsupport@marathonequipment.com](mailto:techsupport@marathonequipment.com) – Please give your phone, Amazon location, who you work for and any information that can help us to help. If you would like someone to call, please ask for a call back, otherwise you will receive an email response.

Paper Copies of the Go Canvas form is available, but all information and pictures must be sent to complete the PM – if you are using your own form, it must include all information requested along with pictures.

**Marathon will Provide PO for the PM – for the PM to be complete and invoice paid, form must be submitted and pictures provided.**

If you do not have a log in for, Go Canvas – contact Marathon Service to be set up or use the following to log in to the Go Canvas App

*Username - [amazonpmservice@gmail.com](mailto:amazonpmservice@gmail.com)*

*Password – Marathon12*

We can issue individual or company access, we will need your email and name to have you added.



**WARNING:** Never enter any part of the compactor until the unit has been locked-out and tagged-out.

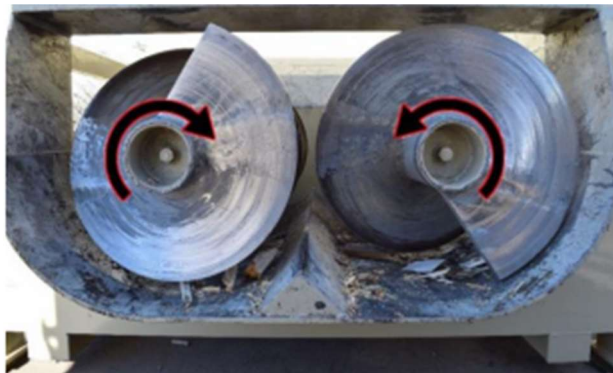
### **Preventative Maintenance: Auger**

1. Check for and correct any unsafe conditions in or around the Auger/Container area. Clean debris from under/around the compactor/container.
2. Check Flexible Conduit for wear or damage and repair as needed (sealtite) Remove rear cover with an impact drill and a 9/16" socket, and then clean debris from chain/sprocket chamber.
3. Check oil and oil level in planetary gearbox. The oil should be translucent and proper level is to the bottom of sight gauge. If not add oil as needed. If overfilled, please drain to acceptable levels. (Use Shell Omaha S4 GX150 or Equivalent)
4. Check Auto Grease by removing lid -Fill Auto-Greaser Reservoir - Grease internal bearings.
  - Fill the grease reservoir per the auto-lube manufacturer's recommendation. The auto-lube system will automatically grease the bearings. (Use NLGI 2 grease. The unit is shipped with Nevastane XS 80 grease.)
  - Depress the "Auto-Lube" button until fresh grease comes out of the drip hose.
  - Clean the excess grease from the drip pan.
  - Clean out excess grease from drip pan.
  - See Marathon form with approve grease and gear oils.
  - Type of Grease used
  - Amount added
5. Check chain for proper tension. The chain should have 1" – 1 1/2" of deflection, on the top side of the chain halfway between the sprockets, when finger pressure is added to the chain. NOTE: The AST-440 chain is non-adjustable.
6. Wipe off chain and then Lubricate Chain
7. Check and torque main sprocket bolts (3) if loose add blue Loctite. Torque to 200 ft/lbs.

**NOTE:** The AST-440 chain is non-adjustable.
6. Wipe off chain and then Lubricate Chain
7. Check and torque main sprocket bolts (3) if loose add blue Loctite. Torque to 200 ft/lbs.



8. Ensure the motor/gearbox/gearbox mounting plate bolts are tight.
9. Check auger screw/flight for material build up (banding, plastic wrap, etc.). Remove if necessary.
10. Check auger screw/flight for damage and report if any damage is seen. Clean any material wrapped around flight.
11. Inspect hard surface welding on the end of the auger fighting. Then you will need to clean off the hard surface welded zone of the auger flights. Next, measure the height of the hard surface weld perpendicular to the auger flight. If the hard-surface weld height is less than 1/8", hard surface material needs to be re-applied.
12. Check Flight Rotation. If the rotation of either or both flights are wrong, motor wiring will need to be changed to correct rotation. (This can change because of changes in 3-phase transformers from time to time)



13. Check for loose nuts and bolts, if any are seen, please tighten.
14. Clean Photocells and reflectors of dust
15. Please note and take pictures of any issues you see, in the description area of the PM form, describe issues.
16. Please take pictures of gearbox on each side of Auger
17. Clean any excess gearbox fluid that is on gearbox or ground.
18. Does auger have a whisker container gone switch or sonic sensor?



## **Preventative Maintenance: Electric Cart Dumper (ECD)**

18. Check for and correct any unsafe conditions in or around the ECD area. Any debris or trip hazard, exposed wires sharp edges, etc. Need to be noted and corrected.
19. Check dumper gearbox oil level, proper level is to the bottom of site glass – you can remove the site glass to drain excess fluid or check levels.
20. Dumper The oil should be translucent, if not it will be needed to be scheduled to be changed.
21. Check prox switch and bracket bolts
22. Lubricate Dumper Motor as Needed
23. Check motor brake and adjust as needed. Please note any excessive pad wear.
24. Check dumper motor break to see if it is engaged or not
25. Check Control – Check auto/manual, up/down, alarms and that all e-stops work
26. Check operation of access device – Make sure the light curtain is shutting down the ECD if your hand passes in from, check top, middle, bottom of light curtain.
27. Check Prox Switch Function – Make sure the ECD is stopping where it needs to and that no faults are noted.
28. Talk to operators or staff – if any issues or alarms, please note and troubleshoot.
29. Check dumper and auger gearboxes for any signs of leaking.
30. Observe all lights on light stack and make sure they are working along with horn
31. Bulbs are good in all reset lights (Safety Relay Reset – Overload Tripped – Container Gone – Light Curtain Reset)
  - Photo of inside of panel box
  - Photo of Dumper Motor with cover removed
  - Photo of panel box closed
  - Photo of Light Stack
  - Photos of Issues

**MARATHATHON TECH SUPPORT @ 1-877-258-1105**

**iSMART SUPPORT @ 1- 833-467-3672**

**WMCS Repairs Team @ 1-866-420-2870**



**Contact the iSmart team during standard business hours Monday – Friday to ensure remote connection**

**iSMART SUPPORT @ 1- 833-467-3672**

**Please photograph any issues that are seen. If the site has concerns, please let us know in the 'Other' section of the form.**

**We now have Auger / Electric Cart Dumper Training Available – Visit us online for more information.**

An advertisement for Marathon Training. It features the Marathon logo, the Nextelligence Connected-Tech Training logo, and the text 'MARATHON TRAINING' in large red letters. Below this, there is a photograph of a black and green electric cart dumper and a man in a blue uniform and cap. At the bottom, a red banner contains the URL <https://www.marathonequipment.com/service-school/>. A small copyright notice at the bottom left reads '© 2024 Marathon Equipment Company | Proprietary and Confidential'. A small number '14' is visible in the bottom right corner of the image area.