



Installing Container Gone Whisker Switch on Auger



Presenter: Matt Carruth

Date: 7/7/2025



Parts

The following steps outline how to replace the sonic sensor with the whisker limit switch.

FOLLOW ALL LOCK OUT - TAG OUT PROCEDURES PRIOR TO WORKING ON ANY PART OF THE EQUIPMENT!!

The "Container Gone Switch Kit" comes with the following: whisker switch, So cord connector w/ compression nut, (2) conduit sealing rings, 5.5 ft of 16/3 SO cord, (2) 10-32 x 2-1/4" machine screws and (2) 10-32 self-locking machine nuts

Item	Description	Qty	
037718	WHISKER LMT SW 600V	1	EA
030435	CONDUIT 1/2 SEALING RING	2	EA
030548	CONNECTOR SO CORD 1/2 .25-.375	1	EA
031240	CORD SJTOW 16/3 WITH INT'L COL	5.5	FT
050010	NUT 10-32 SELF LOCKING	2	EA
050045	SCREW 10-32 X 2 1/4 MACHINE SL	2	EA





Step 1

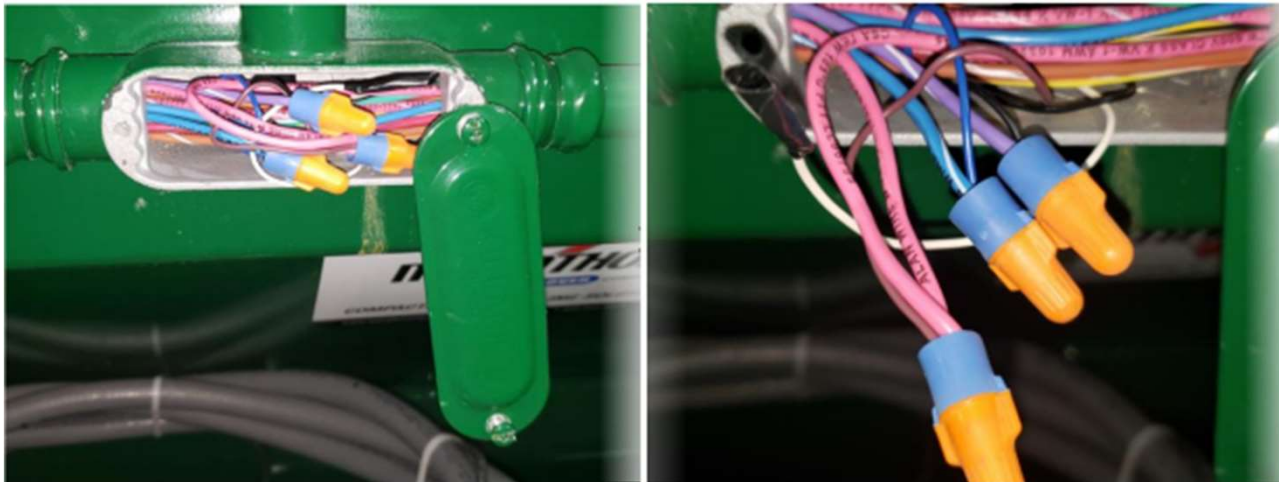
Step 1. Disassemble the whisker switch by unscrewing the two (2) screws in the front of the switch body (FIG 2). Install the SO cord connector into the whisker switch using the two (2) sealing rings. (FIG 3). Insert the SO cord through the SO cord connector and terminate the blue and brown wires under terminals #3 and #4. (FIG 3). Reassemble whisker switch. (FIG 4). Tighten the SO cord connector compression nut





Step 2

Step 2. Remove the cover from the Type-T threaded conduit body where the sonic sensor leads enter the conduit. (FIG 5). This will expose where the sonic sensor leads connect to the internal wiring. (FIG 6) The sonic sensor has four (4) wires. One is not used (white). Disconnect all three remaining wires (blue, black, brown). Loosen the SO cord compression nut and pull loose wires from conduit body. (FIG 7 & FIG 8)

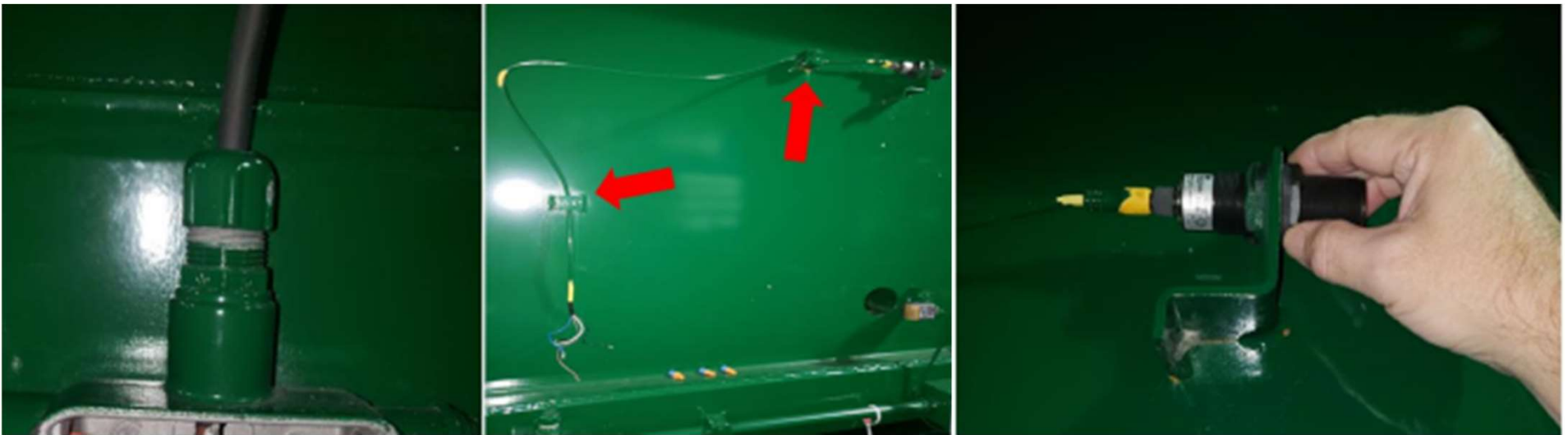


To speak with our technical support group, call: 1.877.258.1105



Step 3

Step 3. Loosen cable restraining clamps using 7/16" wrench (FIG 8) and remove sonic sensor cable. Remove the existing sonic sensor by unscrewing the front locking nut completely (FIG 9) and removing sensor from bracket.



To speak with our technical support group, call: 1.877.258.1105



Step 4

Step 4. The whisker switch will be mounted on the discharge end of the auger unit (FIG 10).





Step 4 – 2

Measuring from the horizontal cross on the discharge end (FIG 11), measure 9" from the top edge of the cross beam, parallel to the side plate (FIG 12). Mark the edge of the side plate. Measure 1-1/2" perpendicular to this mark (FIG 13). This will be the lower mounting point for the whisker switch.





Step 4 - 3

Measuring from the horizontal cross on the discharge end (FIG 14), measure 10-1/2" from the top edge of the cross beam, parallel to the side plate (FIG 13). Mark the edge of the side plate. Measure 1-7/8" perpendicular to this mark (FIG 15). This will be the upper mounting point for the whisker switch.



Using a 7/32" drill bit, drill both upper and lower mounting holes.



Step 5

Step 5. Mount the whisker switch using the supplied 10-32 machine screws and self-locking nuts (FIG 16).





Step 6

Step 6. Route the whisker switch SO cord through the sonic sensor bracket and cable clamps (FIG 17). Remove 4" of insulation off the loose end of the whisker switch SO cord. Remove the compression nut from the Type-T threaded conduit body where the sonic sensor leads entered the conduit. Thread the whisker switch SO cord through the compression nut washer and compression grommet (FIG 18).





Step 7

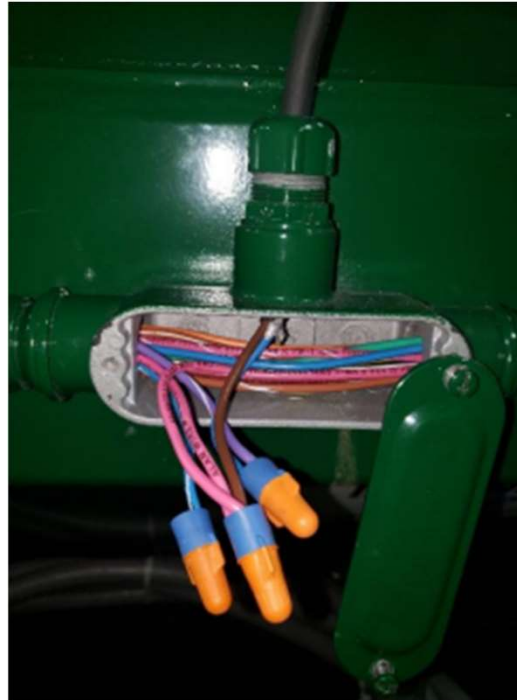
Step 7. Remove 3/8" of the insulation from the brown and blue wires. Thread the whisker switch SO cord into the Type-T threaded conduit body until 4" of the wires are exposed in the conduit body. Screw the compression nut onto the conduit body and tighten (FIG 19).





Step 8

Step 8. Reusing the wire nuts, connect the whisker switch brown wire to the internal pink power leads. Connect the whisker switch blue wire to the internal purple lead. The internal blue w/ white stripe lead will not be used. Using a wire nut, cap off this lead (FIG 20).





Step 9 & 10

Step 9. Push wires back into Type-T threaded conduit body.
Reinstall conduit cover.

Step 10. Restore power from the main service disconnect. You are now ready to operate the auger and dumper.



Helpful Hints

Sites may have different containers depending on hauler.

You may need to adjust position to work with

Their containers.

The position in these instructions are with a Marathon container.



Help

To speak with our
technical support group,
call: 1.877.258.1105



Nexteligenz®
Connected-Tech Training

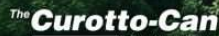
MARATHON TRAINING



<https://www.marathonequipment.com/service-school/>



A family of companies working
for a more sustainable planet.



www.marathonequipment.com